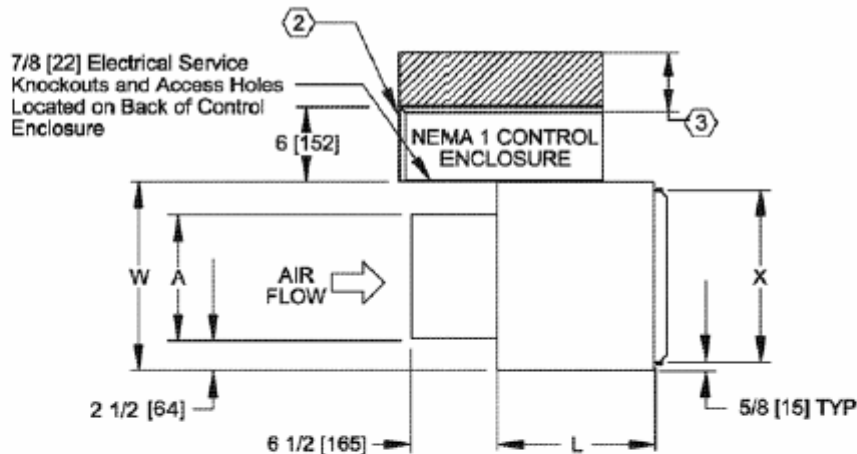


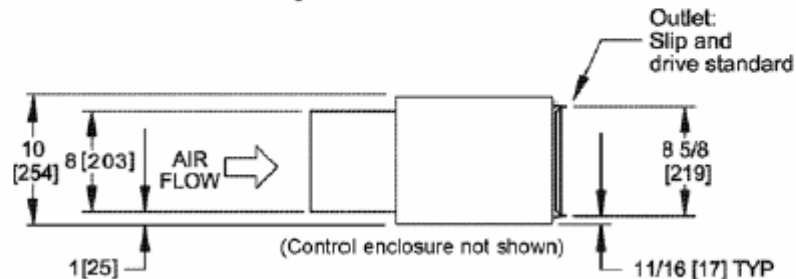
## Single Duct Variable Air Volume Terminal - Rectangular (Model TSL)

| Unit Size | CFM  | Bypass CFM | Dimensions |     |         |         | Weight |
|-----------|------|------------|------------|-----|---------|---------|--------|
|           |      |            | A          | W   | L       | X       |        |
| 10        | 600  | 1200       | 10"        | 15" | 12 1/2" | 13 3/4" | 26     |
| 12        | 800  | 1600       | 14"        | 19" | 12 1/2" | 17 3/4" | 28     |
| 14        | 1200 | 2200       | 20"        | 25" | 16 1/2" | 23 3/4" | 39     |
| 16        | 1500 | 3000       | 26"        | 31" | 16 1/2" | 29 3/4" | 45     |

Notes: 1. For dimensional data for unit sizes 6 and 8, refer to the Single Duct Variable Air Volume Terminal (Model TSS). All dimensions are in inches with a tolerance of 4/8". Weights are in pounds. Weights are for the basic unit with the indicated option and control enclosure. Actual weight varies based on project-specific requirements for unit options, appurtenances, and controls. 2. Control enclosure is standard with factory-mounted electronic controls. 3. Check all national and local codes for required clearances.



**Top View**



**Side View**

**Dimensions – Model TSL**